

CONCERT

All Blues

on the Miles Davis Columbia recording *Kind of Blue* (1959)

Miles Davis

The musical score for "All Blues" is presented in ten staves of music, all in treble clef and 3/4 time. The piece begins with a G7 chord. The first staff (measures 1-4) features a melodic line with a quarter rest in measure 2. The second staff (measures 5-8) continues the melody with eighth and quarter notes. The third staff (measures 9-12) introduces a C7 chord and includes a triplet of eighth notes in measure 12. The fourth staff (measures 13-16) returns to the G7 chord. The fifth staff (measures 17-20) features a D7 chord, an Eb7 chord in measure 18, and a D7 chord in measure 20. The sixth staff (measures 21-24) returns to the G7 chord. The seventh staff (measures 25-28) continues the melodic development. The eighth staff (measures 29-32) features a melodic line with quarter and eighth notes. The ninth staff (measures 33-36) includes two triplet markings over eighth notes. The tenth staff (measures 37-40) concludes the piece with a triplet of eighth notes in measure 37.

41



45



49



53



57



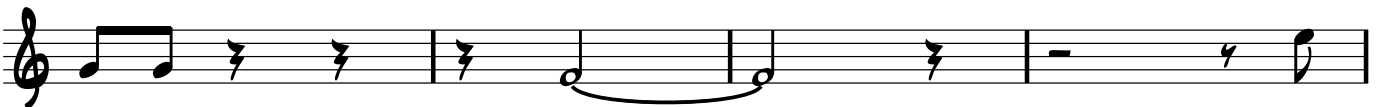
61



65



69



73



77



81



